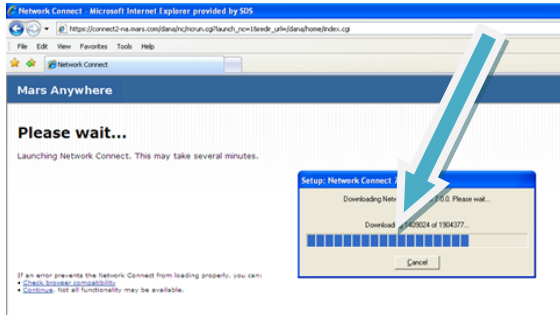
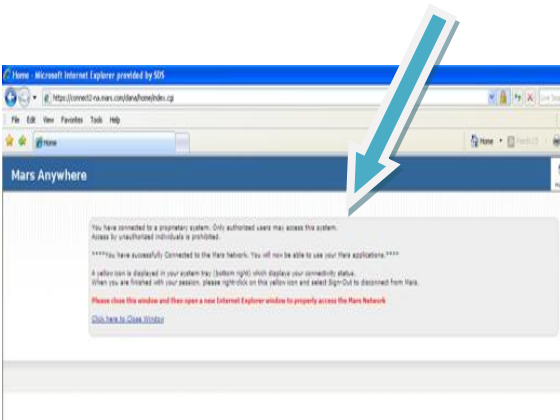


You may see a screen similar to the one shown below as Network Connect is launching.



Once you have successfully connected to the Mars Network, you will see the following screen:



You are now ready to begin working remotely using your Mars laptop!

Disconnecting

To stop using Mars**Anywhere**, simply select 'Sign Out' by right clicking on the padlock in your System Tray.



Where to go for Help?

If you have questions, please contact the **Mars Service Desk** for assistance.



MarsAnywhere

This guide has been designed to help you access the Mars network using Mars**Anywhere**.



Mars**Anywhere** is a new service that replaces several older services across Mars, Incorporated.

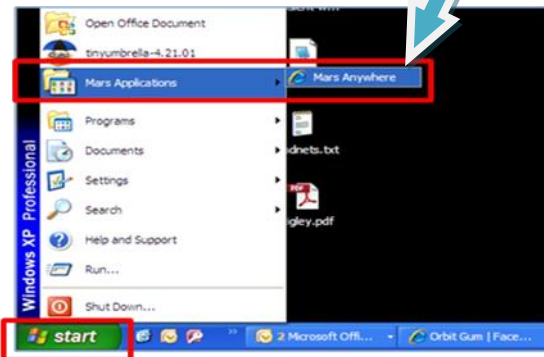
Mars**Anywhere** provides the freedom and flexibility to work from virtually anywhere using a reliable and secure connection.

We have made it even easier to connect - you can select a geographic region i.e. Americas, Europe, Asia Pac or China to connect from instead of a list of specific countries.

Getting Started

Follow the steps below to use Mars Anywhere.

Select the Mars**Anywhere** link from your Mars Applications menu (under your 'Start' button)

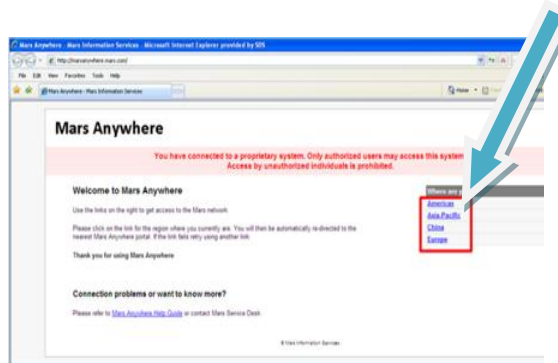


PLEASE NOTE: You can also access Mars**Anywhere** by typing the following address in Internet Explorer

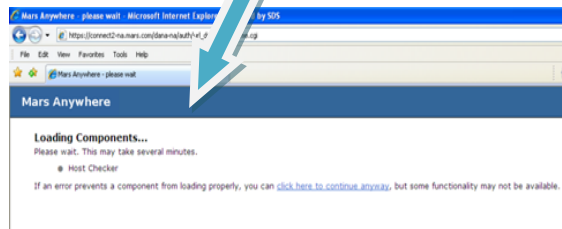
<https://marsanywhere.mars.com>



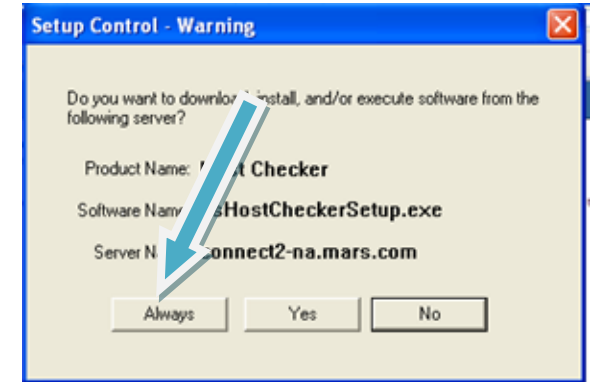
Select the appropriate region you are working from (i.e. Americas, Europe, etc)



You will see a screen that states "Loading Components"



You may also see a dialog box asking to download or install software for Host Checker. If so, please select the 'Always' button.



You can enter your Username (5 and 3) and your MarsWeb Domino password

